



# Arsenal Colorado Player Development League (PDL)

## Orientation Meeting April 21, 2021

When you enter the meeting please:

- Mute your device
- Turn your video on
- Questions? Type your questions in the chat box – we will answer questions at the end of the meeting.
- If you have issues participating: email – [office@soccerfortcollins.org](mailto:office@soccerfortcollins.org)
- We will begin shortly



**Arsenal Colorado**  
**Player Development League**  
**(PDL)**

# Arsenal Colorado: a bit of history...

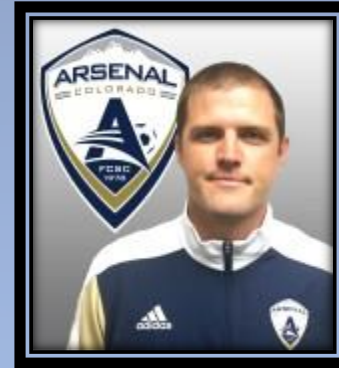
- Established youth club in 1978
- 43 years of soccer excellence & tradition
- National recognition and respect
- Opportunities for thousands of kids in Northern Colorado and Southern Wyoming to play competitive & recreational soccer



# Club Coaching Staff



Jayme Beamer - DOC Girls



Kris Banghart - DOC Boys



Sean Elvert – DOC Goalkeeping

Combined, Arsenal Colorado's PDL staff has over 40 years of coaching and playing experience.



# Program Includes:

- ❑ Experienced, Professional Coaches
- ❑ Individual Team Development Plans
- ❑ Options for competition in CSA's Front Range League (FRL) or our very own 'historic' PDL Home League'
- ❑ Ability based team formation for Travel Teams
- ❑ Home teams based on geographic location of home and school preference
- ❑ Experienced, Professional goalkeeper training
- ❑ Team training sessions run by staff coaches
- ❑ Opportunity for multiple state-wide tournaments
- ❑ On-going team assessments
- ❑ Written Player Evaluations (seasonal)
- ❑ Tech nights
- ❑ Intra-club scrimmages

# PDL Philosophy

- ❑ The league is designed to give players a more consistent level of play and coaching within the recreational division of the club
- ❑ An introduction and pathway to the competitive culture and mindset while still keeping an emphasis on fun
- ❑ Travel teams/players to compete against numerous clubs across the state in the FRL
- ❑ Home teams/players have the ability to take a natural step towards competitive soccer without the full commitment to a travel team





# Player Evaluation...

- All Travel players will be evaluated on the following criteria:
  - **Technical Abilities** (dribble, pass, shoot)
  - **Tactical Awareness** (decision-making, creating space)
  - **Athleticism** (speed, fitness, agility, coordination)
  - **Psychology** (attitude, effort, coach-ability)

# Travel Team Evaluation Process

- Players play small-sided games
- Separate goalkeeper evaluations
- Players play in front of impartial evaluators
- Player scores are tabulated and players are ranked into tiers after day 1





# Travel Team Player Placement



- Coaches will meet for 'Player Placement' directly after the evaluations
- Contact her/his player choices by phone ASAP
- All Player Notifications will be made by May 27<sup>th</sup>
- Any player evaluated for a travel team who is not selected will be guaranteed placement on a home team

*One family's delay in decision-making affects everyone, please be prepared to accept your invitation!*

# Home Team Process



Home teams are formed based on player/family desire

Players will be assigned to home teams after registration closes

Home teams are formed by geographic location and school preference

- Teams will be formed in mid-June, players will be contacted by coach by mid-July

# League Structure



- Colorado Soccer Association (CSA) - Front Range League (FRL)

*-Consists of travel teams only*

- Premier-
- Gold-
- Silver –
- Bronze-

- Arsenal Colorado Home League-

*-Consists of home teams only*

- Boys division
- Girls division

# CSA Front Range League (Travel)



## Season : 16 games

- 8 in the Fall / 8 in the Spring
- 8 games home (Complex) and 8 away
- “Away” may be anywhere along the Front Range

## Fall:

- League season begins \*late August OR after Labor day
- Ends early November

## Spring:

- League season begins mid-March (games over spring break)
- Ends mid-May

*\* All dates are subject to change – per CSA*

# Arsenal PDL League (Home)



## Season : 16 games

- 8 in the Fall / 8 in the Spring
- Home games at complex and away games may include Greeley, Cheyenne, or Windsor

## Fall:

- Season begins after Labor Day
- Ends last weekend of October

## Spring:

- Season begins last weekend of March
- Ends late May

# Tournament Play

- *Most* HOME teams play in a minimum of one tournament during each season (Fall/Spring)
- TRAVEL teams participate in a maximum of two tournaments per season (Fall/Spring)
- Costs for tournament entry is additional to player registration fees for both Home and Travel teams



# Program Overview



- **Staff-run training sessions**
- **Tech Nights**
- **Age group lead training sessions by Directors**
- **Goalkeeper training**
- **Opportunities for training/playing up**
- **Summer/Winter Camps/Clinics (optional)**
  - **5v5 summer league – Winter Futsal**

# Player Expenses

- **Exact amount:** determined by the team coach and parents as part of the process of forming and approving the team's annual financial statement.
- **Total fees include:** costs for registration, equipment, uniforms, tournaments, social activities, and coaches expenses (Mileage reimbursement, etc)





# What's Included...



## • Current (2020/2021) Registration Fees: *(fees subject to change)*

- U9 Home \$325 per season
- U9 Travel \$415 per season
- U10 Home \$325 per season
- U10 Travel \$415 per season

## • Uniforms: *(fees subject to change)*

- \$75 Required Uniform (includes) two-Jerseys, shorts, socks
- Optional – warm-ups, training kit, backpack*

# 2021-2022 Coaching Staff



## 2013 (U9) Boys

*Academy-* Banghart/Stern

*Gold-* Banghart/Casson

*Royal-* TBD

## 2012 (U10) Boys

*Academy-* Banghart/Stern

*Gold-* Banghart/Casson

*Royal-* TBD

## 2013 (U9) Girls

*Academy-* Beamer/T Donovan

*Gold-* Beamer/B Donovan

*Royal-* TBD

## 2012 (U10) Girls

*Academy-* Beamer/T Donovan

*Gold-* Beamer/Romero

*Royal-* TBD

\*Home Coaches will be announced upon completion of registration

# The *goal* of evaluations is to...

Allow coaches the opportunity to fully evaluate every individual ...



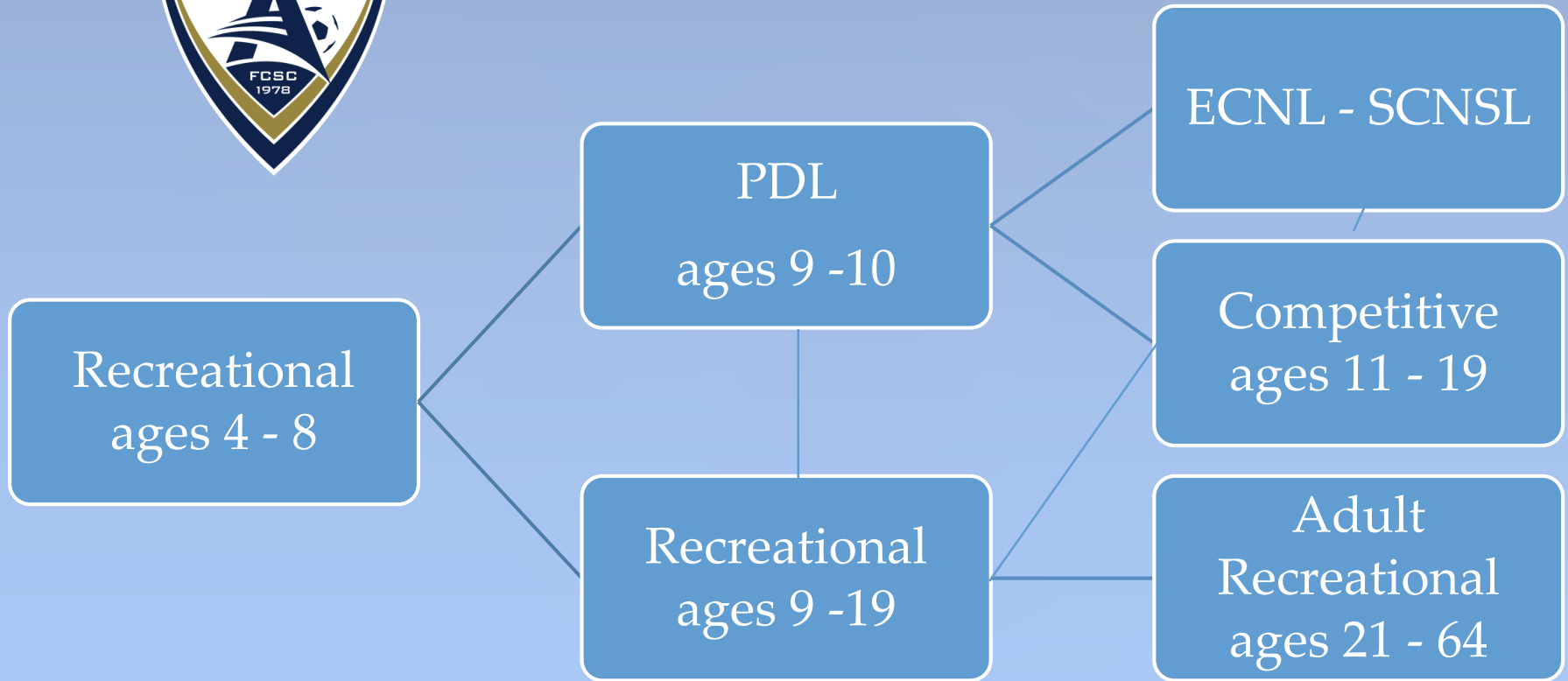
Players are grouped based on like-ability..



Players achieve maximum development!



# Development Pathway



# Registration

**BYT / Tryout Registration:** online [www.soccerfortcollins.org](http://www.soccerfortcollins.org)

- **Cost:** \$10 for training shirt – all players must register online in advance. Shirts will be provided at first BYT session.

## **Program registration:**

- **Travel:** after teams are formed (players have accepted spots) a registration link will be sent for players to register.

- **Home:** registration for home teams will open on May 13. Registration link will be sent to players and posted on home page of website.



Your questions, please ...

Thank you for the *privilege* of working  
with your family!

[beamer@soccerfortcollins.org](mailto:beamer@soccerfortcollins.org) (girls)

[banghart@soccerfortcollins.org](mailto:banghart@soccerfortcollins.org) (boys)

[office@soccerfortcollins.org](mailto:office@soccerfortcollins.org) (admin)